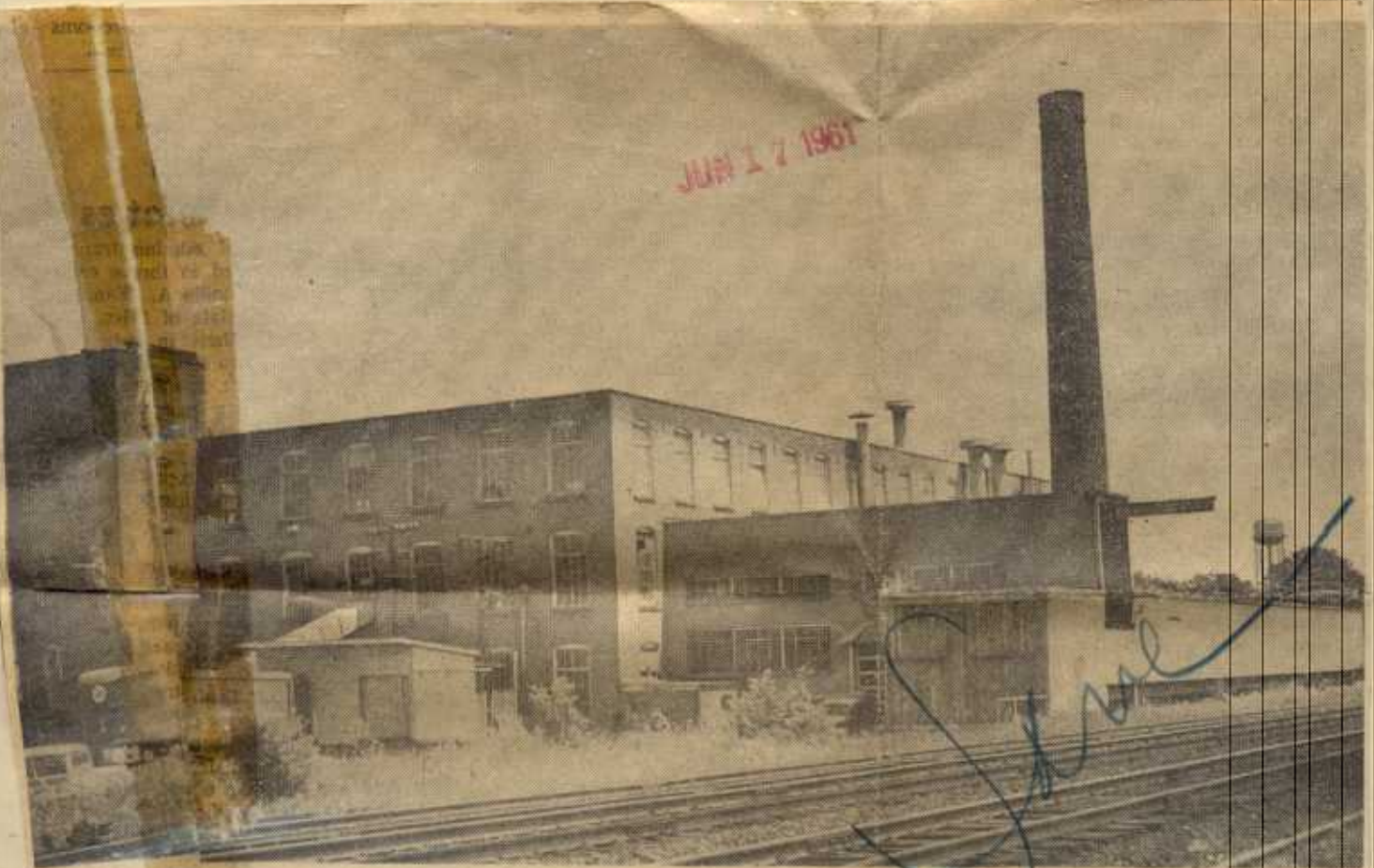
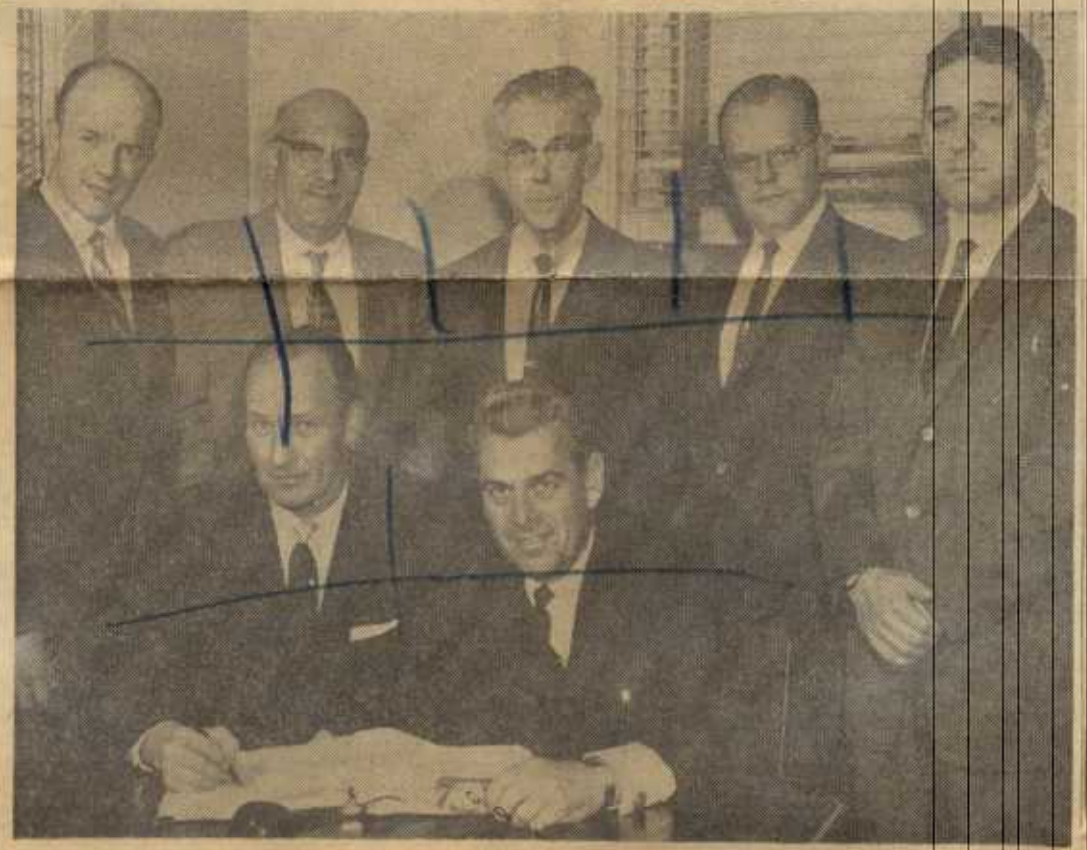


Keating plant, dies, fixtures and

JUN 17 1961



STEEL PARTITIONS' DOW STREET PLANT SOLD TO NEW COMPANY



NEW LOCAL COMPANY BUYS STEEL PARTITIONS — G. Elving Lundine, seated left, president of the newly formed Dowcraft Corporation, signs for the purchase of Steel Partitions, Inc. Irving Fox, attorney for the latter firm, witnesses the signing. Officials of Dowcraft Corporation, standing left to right, are M. Roy Gustafson and John Berglund, directors; Ralph S. Millard, vice president; Theodore E. Johnson, secretary-treasurer; and Alfred G. Ford, attorney for Dowcraft. —Post-Journal Stafffoto