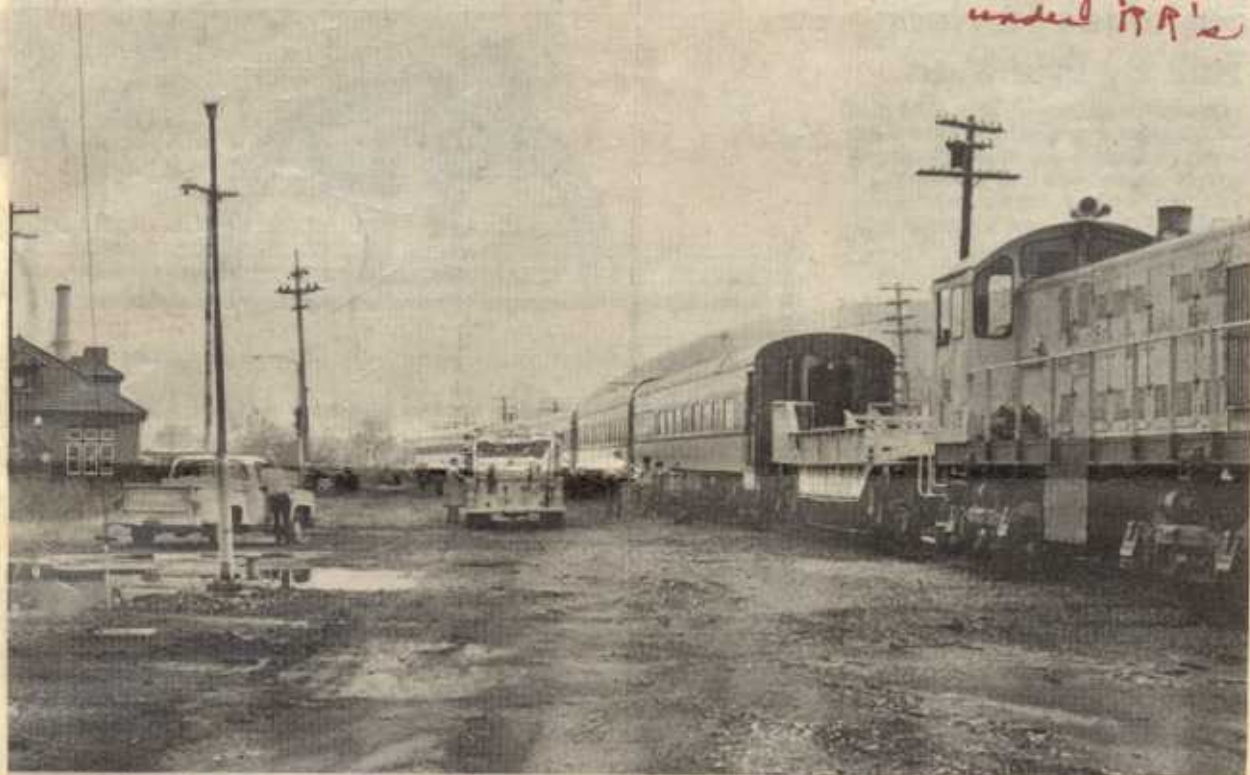


*pic in big file
under ITR's*



Final Excursion

This New York and Lake Erie Railroad passenger excursion train stopped at the Salamanca Rail Museum recently. While 280 passengers toured the museum, Salamanca volunteer firemen provided water for the

NOV 6, 1984

passenger coaches. Railroad owner Robert Dingman said the final excursion of the year from Gowanda to Salamanca and back ran Saturday.

P-J photo by Donna Snyder