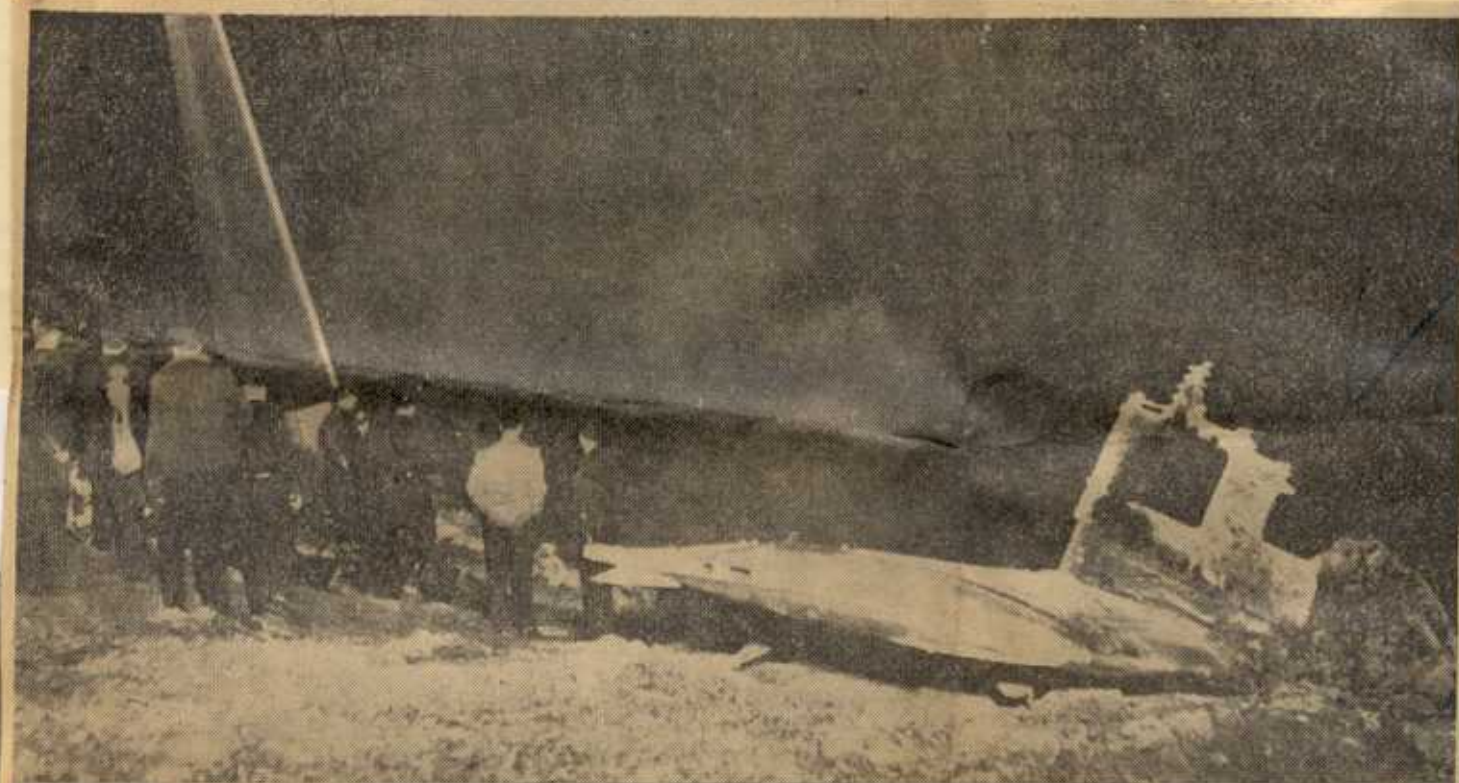


JAMESTOWN, N.Y., MONDAY, APRIL 2, 1956



FATAL CRASH SCENE—Police and airport personnel in top picture inspect wreckage of a twin-engine TWA airliner which crashed at Pittsburgh last night, killing 22 of the 36 persons aboard. Lower scene is another view of the wreckage with airport building lights in the background. The plane crashed seconds after taking off on a flight to Newark, N.J.

—AP Wirephotos