

Union-National Giving Increases

OCT 18 1958

# Plant Employees Aid Drive

Union-National  
Workers Earn  
Banner

Employees of Union-National, Inc., furniture manufacturing company at 226 Crescent Street, have swelled Jamestown Area Community Chest-Red Cross campaign by \$2,003 as result of a 69 per cent increase over pledges received last year at the same factory.

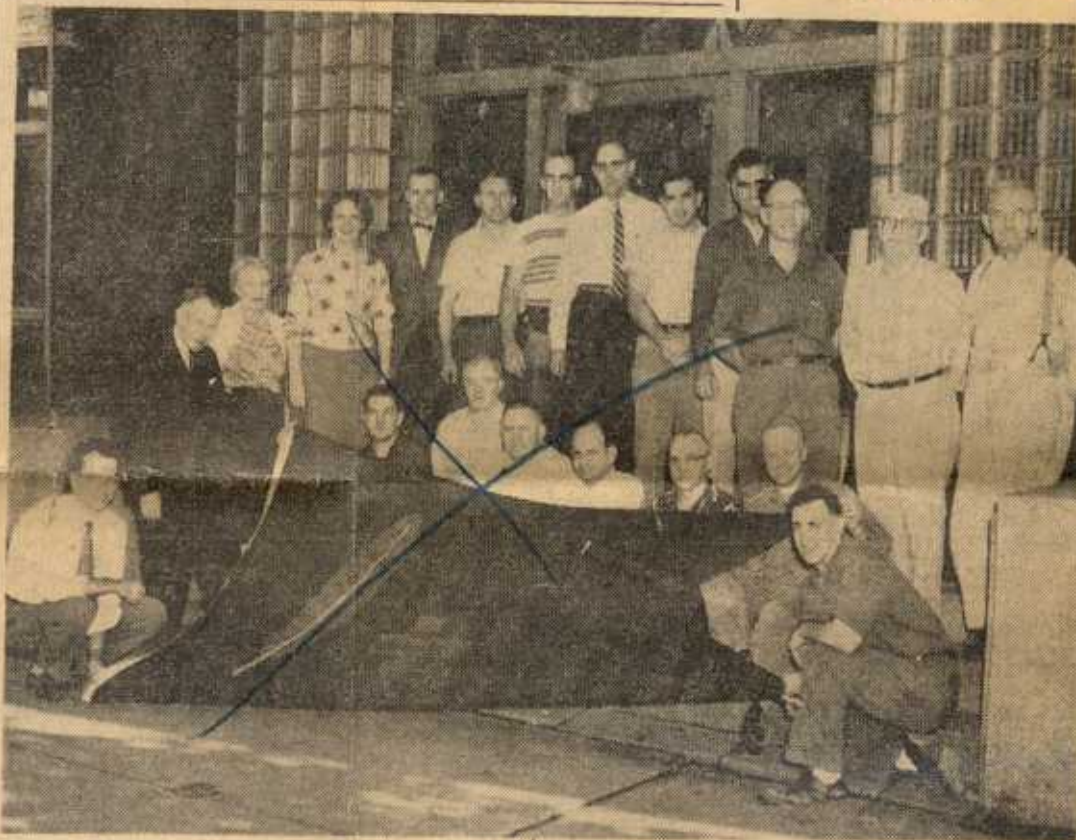
Of the company's 133 employees, 95 per cent took part in this year's effort for an average per capita gift of \$14.90. Last year's average was \$9.01.

Aldor M. Nord is president of the manufacturing firm and directing the Community Chest-Red Cross solicitation effort at the plant were Willard V. Fichtel, production manager; and Anthony Mistretta, president of Local Union 34, United Furniture Workers of America, (A.F.L.-C.I.O.).

Curtis W. Haug and Robert Hanson, co-chairmen of the drive's Industrial Division, commended workers at the plant for their outstanding contribution. The men said, "We are very happy about the excellent job done again this year by employees of Union-National, Inc."

"The quantity of their givers as well as quality of their gifts will, we hope, serve as an incentive to employees of other industrial plants. If the same amount of giving is kept up in those plants yet to be solicited, we are sure this division will more than make its goal."

"We wish personally to thank Mr. Nord, Mr. Fichtel, Mr. Mistretta and all employees for cooperation in this very worthwhile community effort."



**UNION-NATIONAL RINGS THE BELL**—Officials and employees of Union-National, Inc., were awarded a Community Chest-Red Cross banner for their contributions to the current campaign, in which 95 per cent of the employees contributed. Holding the banner are, from left, front: Willard Fichtel, production manager; Harold Carlson, Peter J. Fagan, Axel Norberg, Sandy Rizzo, Hugo Applequist, Roy Stenander, and Anthony Mistretta, president of Local 34, United Furniture Workers of America, (A.F.L.-C.I.O.); standing: Aldor M. Nord, company president; Mabel S. Olson, Bette Garlinger, John Nord, Saro Messina, Henry Wilson, John Abrahamson, Joseph Spitale, Charles Gaeta, Charles Goodwin, Walter Freeburg and Gilbert Anderson. The average per capita gift was \$14.90 for a total of \$2,003.

—Post-Journal Stafffoto