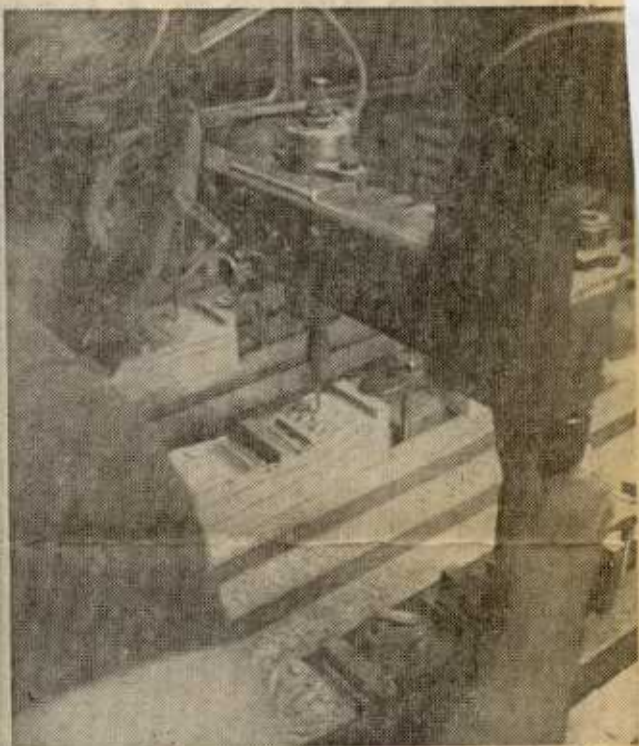


stown Revival'



ED PETERSON, left, leans forward to carefully guide the probe over the master wood pattern. The cutters of his machine, imitating the direction of his probe, shown above, can carve 24 pieces of wood at one time.



PAUL COMBS' COMPANY, Jamestown Lounge, is known for its massive Feudal Oak furniture with rough-hewn carvings.